

South Yorkshire Municipal Waste Strategy - Project Highlight Report

Executive Summary

As with many other things progress of the Environment Bill was impacted on due to Covid 19. The Public Bill Committee has now completed its work and has reported the Bill with amendments to the House. The Bill is now due to have its report stage and third reading on a date to be announced¹. Amendments can be made to the Bill at Report Stage. Amendments to be considered are selected by the Speaker.

The resources and waste section of the Bill sets out powers which aim to facilitate a move from the 'take, make, use, throw' system to a more circular economy. The Bill policy statement states that "Our ambition is to keep resources in use for longer and ensure that we extract maximum value we can from them".

The Resource and Waste Strategy for England (RWSE) sets out how the move towards a more circular economy will be achieved in England.²

Much of the detail that will allow the outcomes of the RWSE to be delivered are subject to further consultation. The projected date for the consultations has moved several times and they are now expected to commence in March 2021. It is expected that the consultations will be open for a twelve week period the BDR Manager has raised concerns with representatives of Defra about the timing as it coincides with the financial year end, local elections and potentially a roll out of Covid vaccinations. These consultations build on the initial consultations³⁴⁵ and are expected to include further details and questions on the proposed Deposit Return Scheme, Extended Producer Responsibility and Consistency in Household and Business Collections.

It is proposed to subject the South Yorkshire Municipal Waste Strategy to a strategic review to ensure alignment with the emerging Resource and Waste Strategy for England. Outcomes and outputs that will potentially be impacted by this are shown in this highlight report in red writing.

Waste Planning policies for Barnsley MBC, Doncaster MBC and Rotherham MBC are currently contained within the Barnsley, Doncaster and Rotherham Joint Waste Plan (Adopted 2012). Waste Policies for Sheffield CC are within the Core Strategy (adopted 2009). Waste policies in both these plans are in need of a review to take

¹ [Environment Bill 2019-21 — UK Parliament](#)

² [Resources and waste strategy for England - GOV.UK \(www.gov.uk\)](#)

³ [Introducing a Deposit Return Scheme \(DRS\) for drinks containers \(bottles and cans\) - GOV.UK \(www.gov.uk\)](#)

⁴ [Waste and recycling: making recycling collections consistent in England - GOV.UK \(www.gov.uk\)](#)

⁵ [Packaging waste: changing the UK producer responsibility system for packaging waste - GOV.UK \(www.gov.uk\)](#)

account of amendments in national legislation and changes within the waste market itself.

As these plans require updating within similar timeframes, agreement has been made between the 4 authorities to investigate producing a new Joint Waste Plan, which would cover the entire South Yorkshire area.

Producing a joint Plan has a variety of benefits as waste management is already a cross-boundary matter that requires careful coordination and cooperation between local authorities across the region. Government guidance also states that local authorities should work jointly to collect and share data and information, taking account of waste arisings across neighbouring planning authority areas and the government's latest capacity forecasts in their plans. A joint Plan would also allow any capacity gaps identified to be dealt with across the area.

Workstreams that are continuing until the strategic review has been completed are shown below: -

- Development of the Commercial waste services across the Partnership, particularly at the HWRC's (Strategic Priority 3 & 5)
- To have an independent review of the partnership undertaken by Local Partnerships to enable the South Yorkshire Councils to move forward together (Strategic Priorities 2 and 5)
- Assessment of the impact of Brexit on the South Yorkshire Waste Management services (Strategic priority 5)
- Development of future service provision including HWRC post 2020. (Strategic Priorities 2 & 5). Management of recycling market risk (Strategic Priority 5)
- Oversight of the recycling targets across the four councils (Strategic Priority 1)

Workstreams that have been completed

- How to ensure maximum cost recovery from clinical waste service. (Strategic Priority 3)

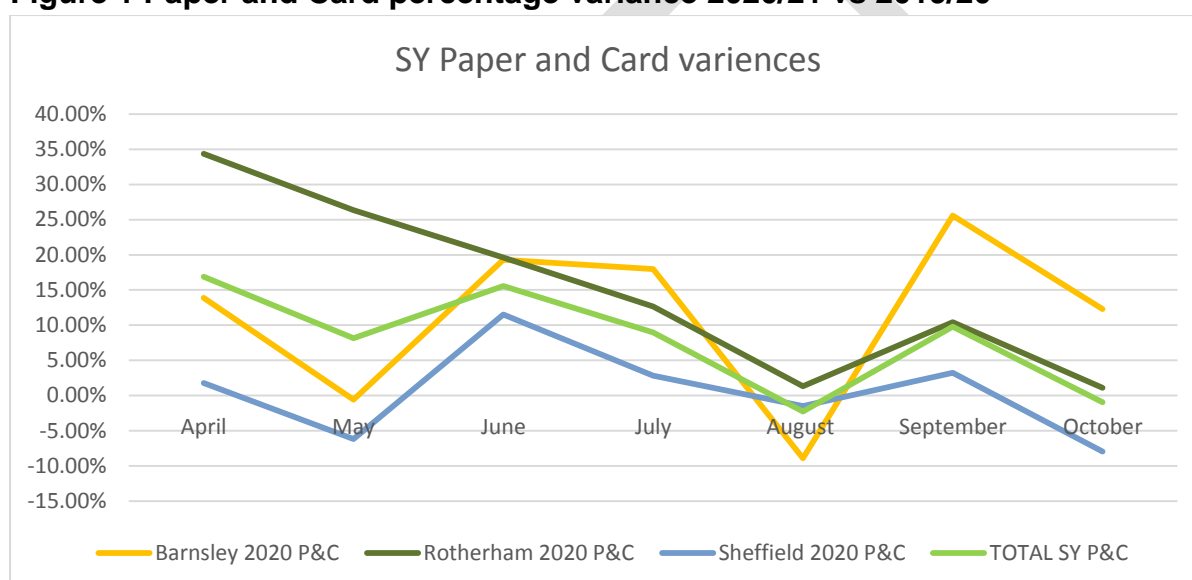
Coronavirus Pandemic impacts on waste levels

Paper and Card

There has been an overall increase in paper and card tonnage collected over the pandemic. Doncaster do not collect paper and card separately. Rotherham had a larger variance in the early months due to their new service not being completely rolled out in early 2019/20.

Where resources were stretched this service was ceased for a short while which is evident where the variance is negative. There are some variations due to the number of collection days in a month however it can be seen that levels of paper and card are still slightly higher than in previous years.

Figure 1 Paper and Card percentage variance 2020/21 vs 2019/20

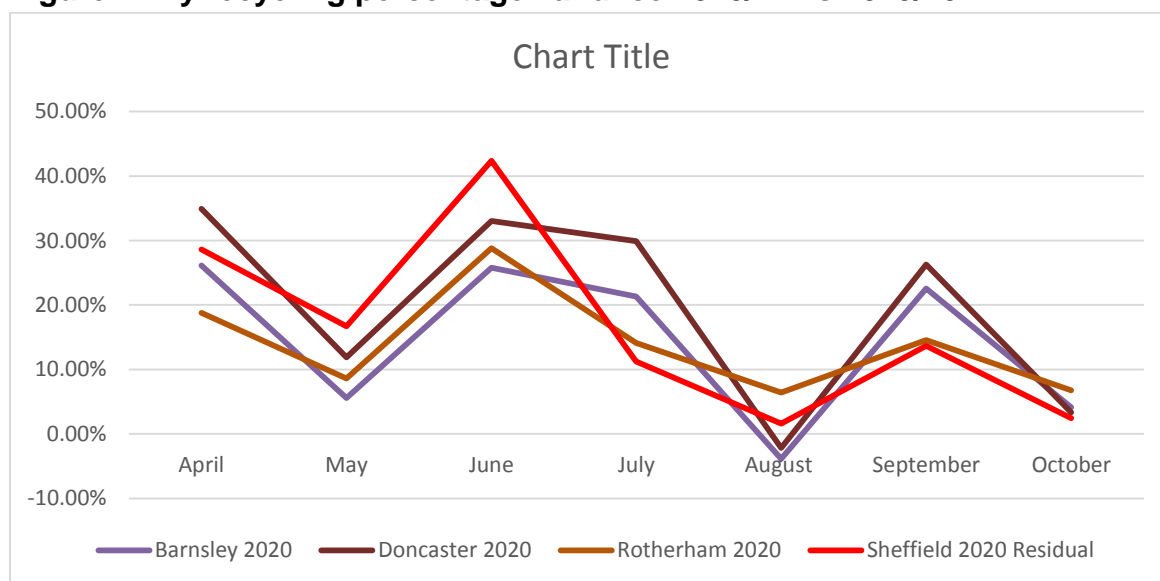


Dry Recycling

All four councils have seen an increase in dry recycling tonnages collected at the kerbside which, along with social distancing measures, put further pressure on resources. Figure 2 illustrates the percentage increase in dry recycling for the South Yorkshire Waste Partnership councils during the pandemic. It can be seen that June and July were particularly impacted this will be partly due to the number of collection days and partly due to more people holidaying at home.

As Doncaster collect glass separately this was included in this chart for completeness.

Figure 2 Dry recycling percentage variance 2020/21 vs 2019/20

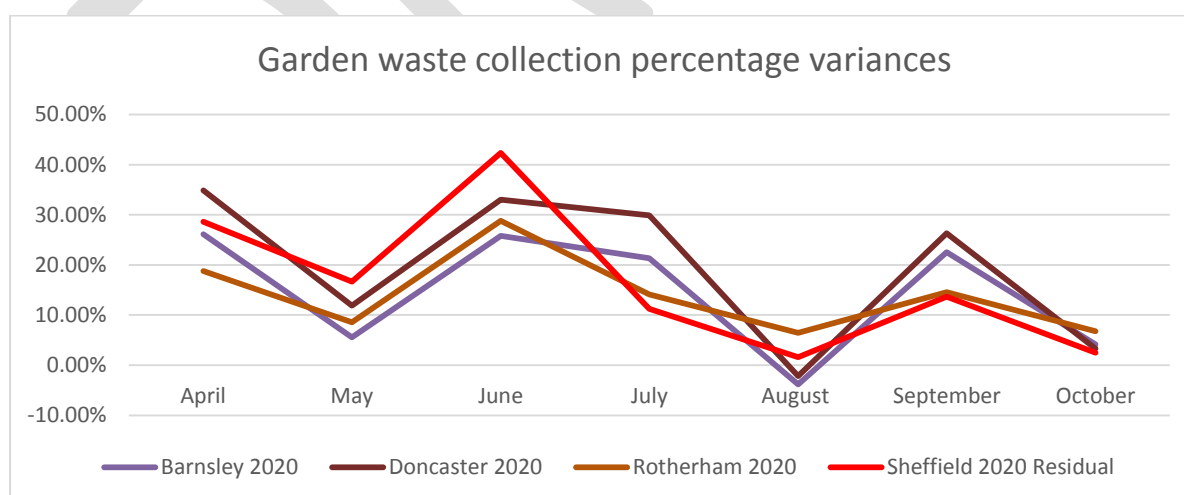


Composting

Doncaster and Barnsley provide a free garden waste collection service while Rotherham and Sheffield both provide a charged garden waste collection service.

As garden waste collection is a discretionary service for which a charge can be made this was the first service to be stopped during the pandemic due to resource impacts.

Figure 3 – Composting variance 2020/21-2019/20



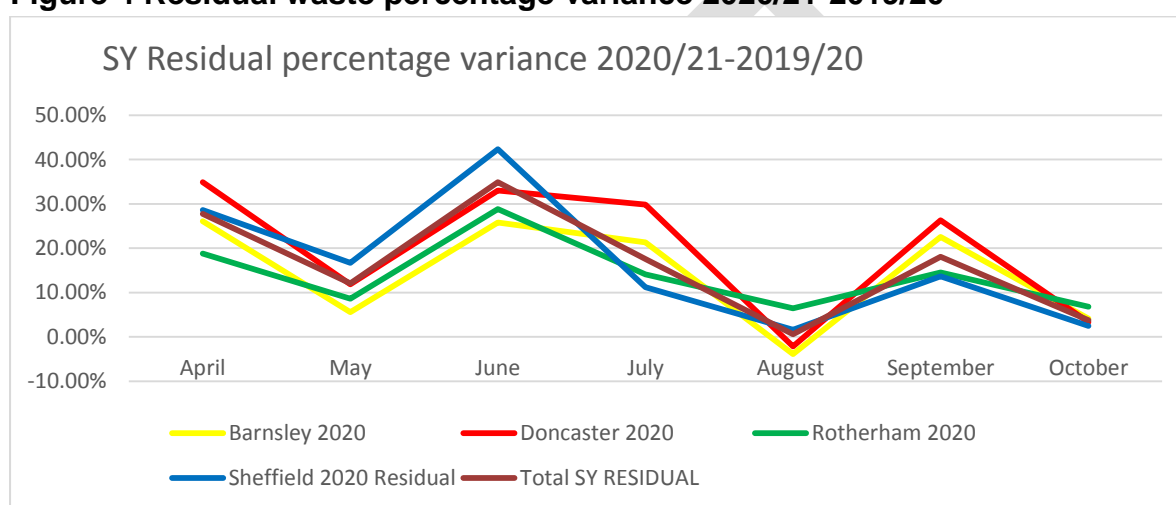
The above graph illustrates the impact on composting tonnages collected during the pandemic. Sheffield were the only council that had sufficient resources to continue to deliver the garden waste collection service. There was an increase in demand for their charged service during the lockdown period this may in part have been due to

the impact social distancing had on queues at HWRCs. Rotherham reintroduced their Garden waste collection in April and Barnsley followed suit in May. Doncaster introduced a monthly collection in June but stopped the collections early due to resource issues.

Residual Waste

All four South Yorkshire Councils saw increases in residual waste. These are influenced by the number of collection days but even accounting for that it can be seen that the pandemic and people working from home has had an impact on the amount of waste generated at household level.

Figure 4 Residual waste percentage variance 2020/21-2019/20



BDR Household Waste Recycling Centres

In the early stages of the pandemic BDR closed their HWRCs due to issues caused by queuing at the facilities. The queues on the highway were due to social distancing measures that had to be implemented on sites.

When the sites re-opened social distancing measures were still in place and traffic management measures were put in place to reduce queuing outside the sites. During the initial lockdown only essential waste was to be accepted on site, as lockdown measures eased more waste types were accepted and now all waste types are accepted on sites. Social distancing measures are still in place and the contractor is undertaking extra cleaning on sites.

RMBC have changed the opening hours on their network and as of the 1st November introduced seven days a week opening on all sites.

Figure 5 shows the percentage variance in composting tonnages in 2020/21 compared to 2019

Figure 5 – percentage variance in HWRC composting 2020/21-2019/20

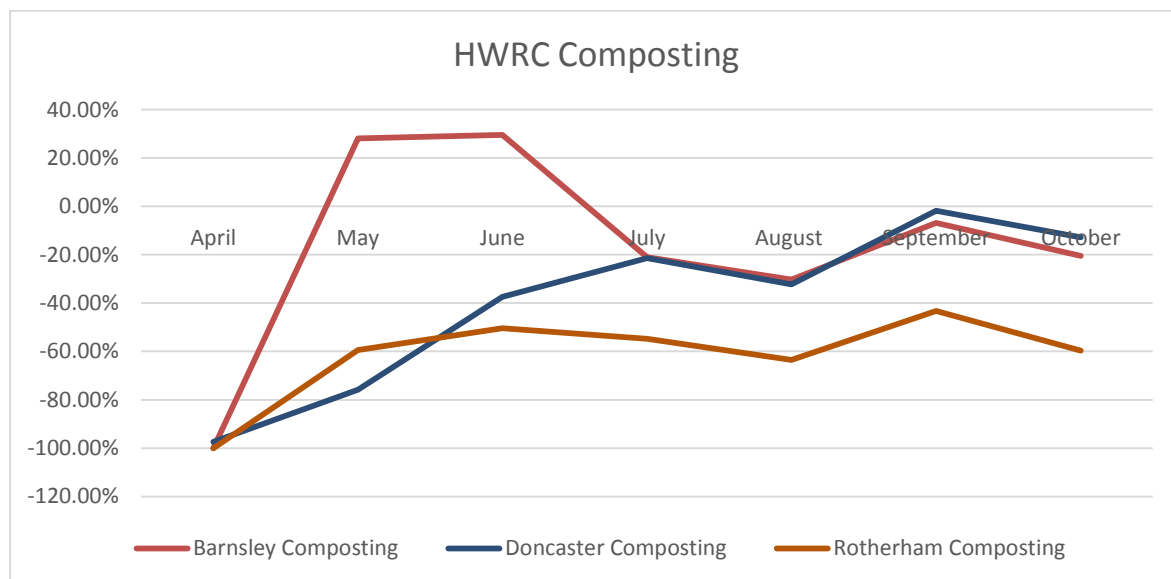
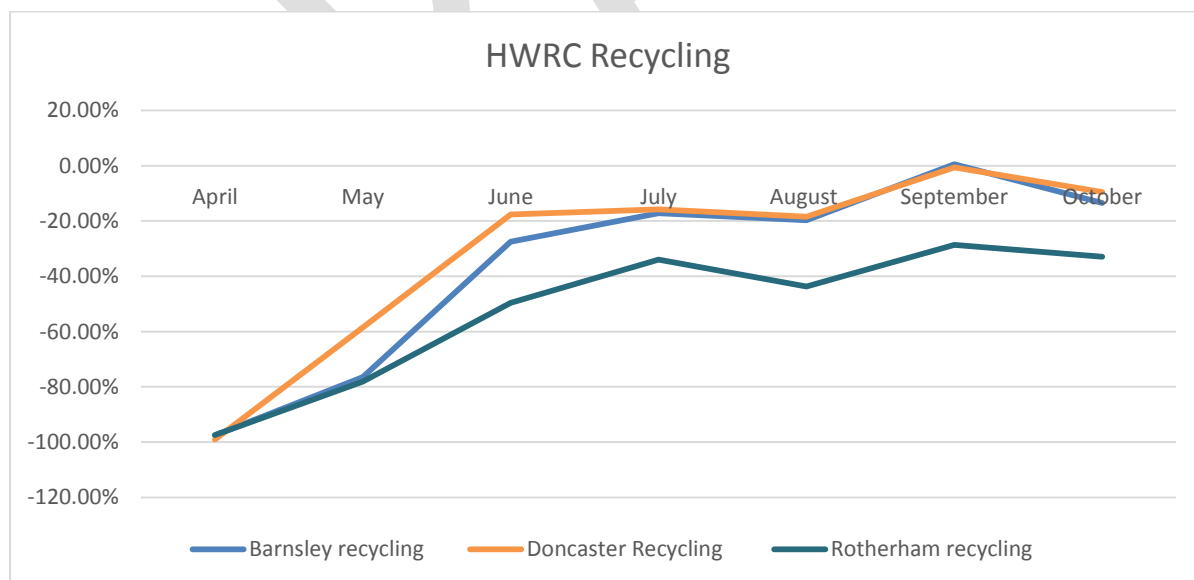


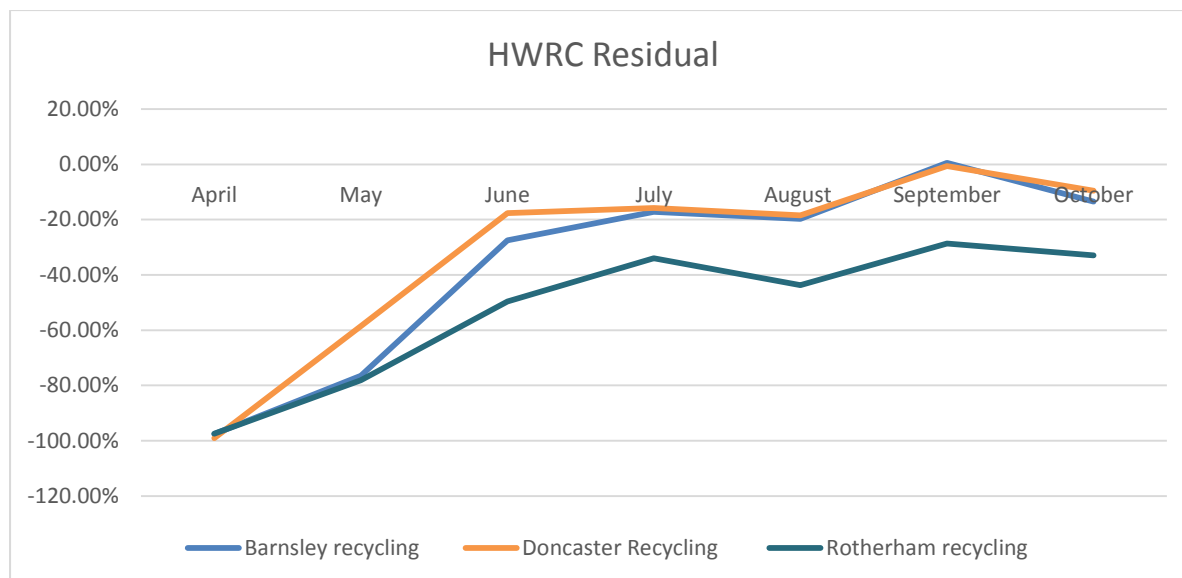
Figure 6 shows the percentage variance in recycling tonnages in 2020/21 compared to 2019/20

Figure 6– percentage variance in recycling 2020/21-2019/20



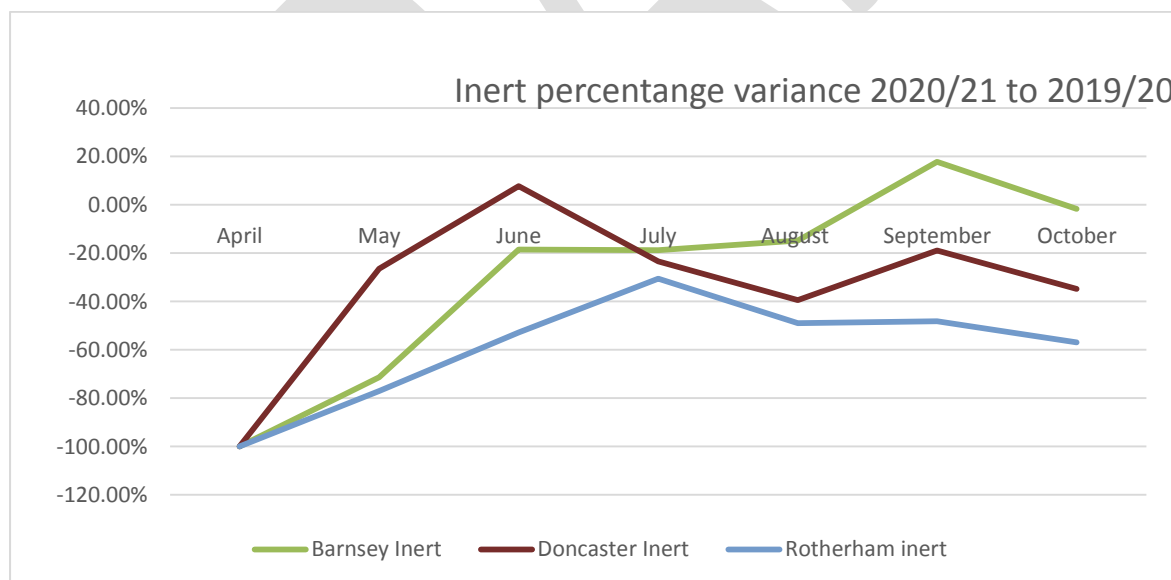
It can be seen that the recycling tonnage has started to return to similar levels to 2019/20 in Doncaster and Barnsley. This may be due in part to the size of the sites in these areas and their ability to accommodate more vehicles without queuing.

Figure 7 – percentage variance in residual 2020/21-2019/20



Once more the graphs shows that tonnages are now levelling off at 2019/20 levels in Barnsley and Doncaster with less waste going through the RMBC sites.

Figure 8 – percentage variance in inert 2020/21-2019/20



A similar pattern can be seen in the inert tonnages to that of recycling, composting and residual

Key Period: September 2020 – December 2020

The activities are RAG rated as indicated in the table below

Green	On track
Amber	In progress
Red	Behind schedule
Blue	Discovery Stage
Grey	Stop until further details on Resource and Waste Strategy are available

- **Strategic Priority 1 – The vision is to encourage and inspire children and adults across South Yorkshire to make less waste by reducing, reusing and recycling more. Interim Priority Lead Lisbeth Baxter.**

1.1 Work-stream Status

Table 1

Work-stream	Owner	End Date	Previous meeting rating	Current meeting rating
Increase recycling by 10kg per household by 2021	Steering Group	March 2021	Green	Green
Reduce household waste by 2kg per household each year – year on year until 2021	Steering Group	December 2021	Green	Green
Deliver a targeted reduce, re-use recycle campaign to at least 100,000 households across South Yorkshire each year.	Community Education and Liaison Officer (CELO)	December 2021	Green	Green
Make available waste education resources for all Key Stage 2 and Key Stage 3 children in South Yorkshire by October 2018	Community Education and Liaison Officer (CELO) – Commercial Waste Departments in each council	October 2018	Amber	Green
All of our actions, practices, policies and communications will be reviewed and written to uphold the principles of the waste hierarchy by December 2019	To be assigned by Gill Gillies	December 2019	Blue	Halted for review

The policy workstream has been halted until after the strategic review of the strategy. It should also be noted that the emerging Resource and Waste Strategy is likely to move away from weight based to potentially carbon-based targets and place more emphasis on resource efficiency.

1.2 Performance trends

Performance from waste dataflow

Table 2 – annual performance

Item	2017-18	2018-19	2019-20	2020-21
Dry recycling kilograms per household ⁶	223	221	221	
Garden waste kilograms per household ¹	137	132	133	
Residual waste kilograms per household ¹	522	503	500	
Landfilled kilograms per household ¹	29	25	19	
Total Waste per household	911	881	873	
Number of schools with a Council recycling service	TBC	TBC	TBC	

The information in the table above will be updated on an annual basis at year-end post June following the submission and verification of waste data flow information.

1.3 Joint / Individual Working Arrangements

Table 3

	Barnsley	Doncaster	Rotherham	Sheffield
Residual	BDR PFI MBT/AD Renewi Ends 2040 (can be extended to 2045)			Sheffield's ERF Veolia PPP Ends 2038
HWRC	FCC joint contract with BDR Ends October 2021 (potential to extend to 2023)			Subcontracted to Veolia UK until 2021
Garden Waste	Freeland Horticulture Ends extended until 2020 (can be extended a further year).	Freeland Horticulture Ends 2023 (potential to extend to 2025)	Biowise Limited T/A Wastewise Awarded 2020 ends 2023 with the potential to extend by 2 x 12 months	Veolia PPP Ends 2036 Disposal subcontracted to SJB, currently being market tested
Paper and Card	Kerbside - Palm Recycling Extended to 2021	Dealt with through SUEZ Contract. Ends 2026	From 1/1/19 – New contract with Veolia ES, Beighton to recycle Paper and Cardboard. Ends 2024 (potential to extend to 2026)	Veolia PPP Ends 2036

⁶ Information extracted from waste dataflow www.wastedataflow.org

Mixed Dry Recycling	GRUK Recycling Ends 2020 (option to extend)	Dealt with through SUEZ Contract. Ends 2026	From 1/1/19 – New contract with HW Martin ES, to Recycle Glass Bottles, Steel and aluminium tins and cans + plastic Bottles, Pots Tubs and trays and Textiles. Ends 2024 (potential to extend to 2026)	Veolia PPP Ends 2036
Commercial Waste	BDR PFI MBT/AD Renewi Ends 2040	BDR PFI MBT/AD Renewi Ends 2040	In-house collection. Disposal BDR PFI MBT/AD Renewi Ends 2040	Veolia PPP Ends 2036

1.4 Key Activities completed during this period

1.4.1 Increase recycling by 10kg per household by 2021

Figure 9

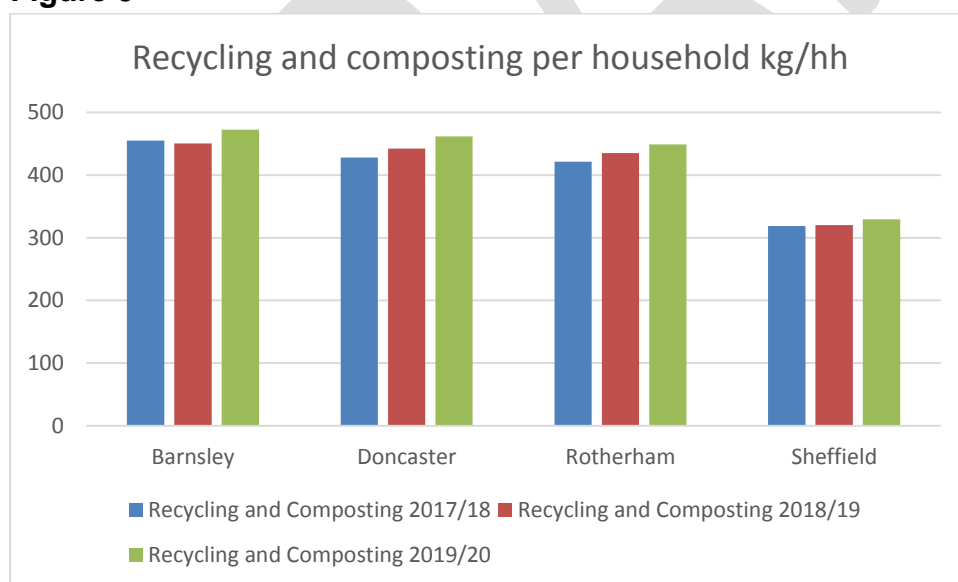


Table 4

Recycling and composting per household	Barnsley	Doncaster	Rotherham	Sheffield*
Kg Change 2019/20 vs 2017/18	17.34	33.49	27.50	10.67

* Validated information not available at the time of writing the report so may be subject to change.

It can be seen from the information above that there has been an overall increase in recycling and composting in excess of 10kg per household therefore this target has been achieved up to 2019/20. The pandemic has increased dry recycling arisings but there was disruption to the garden waste services in South Yorkshire so at this stage it is difficult to ascertain the overall impact this will have had on achieving this target in 2020/21.

Barnsley

Dry mixed recycling (DMR) saw an increase of 30.54% between April and October 2020, contamination was at 3.19% which is up 0.17% on last year. Mixed paper and card recycling increased by 10.85% contamination rose to 7.62% up 2.53% on the previous year.

COVID has had a significant impact on the volumes of waste being generated at the kerbside, this trend is expected to continue until at least March and most likely beyond.

Doncaster

Doncaster collect paper, cans, plastic bottles, liquid food cartons and card in a blue bin with glass continuing to be collected in the green box. Additional materials (textiles, shoes and Waste Electrical & Electronic Equipment (WEEE)) have temporarily been suspended due to the pandemic.

Due to the pandemic, there has been an increase in kerbside tonnages for residual & recycling, this is continuing and throughout October & November the increase for residual waste & recycling was approx 15%.

Green waste collections were suspended in March 2020 and resumed on 23rd June on a monthly basis. During the first 4 week cycle the tonnage had increased by 200% which was anticipated. Fortnightly collections were reinstated on 1st September, however these collections ceased early at the end of October due to staff testing positive for Covid and self isolating.

The new Treatment contract for the bulky/oversize waste that further reduces waste to landfill is going well and DMBC waste and recycling services currently send less than 3% of waste to landfill.

Rotherham

The paper and card bin swap that was introduced in November 2018 has seen a year on year increase. The new Dry Material Recycling (DMR) service implemented in early 2019 gave an increase of 49.37% DMR in 2019/20 compared to the previous

year. Contamination levels continue to improve and are now running at an average of 18.5% but with a reducing percentage trend.

The garden waste service has over 40,000 subscriptions. The amount of waste collected in 2019/20 decreased by 33.57% (5,307.08 tonnes) compared to the previous year. Garden waste recycling at HWRC's, increased by 35.76% (1,300.21 tonnes) in 2019/20 compared to 2018/19.

Sheffield

The Pandemic has continued to have a significant impact on recycling figures particularly mixed dry recycling collections (glass, cans and plastic bottles). That waste stream is up by over 20% in the year so far (compared to last year) however paper and card remains at a similar level to previous years.

1.4.2 Reduce household residual waste by 2kg per household each year – year on year until 2021

Figure 10

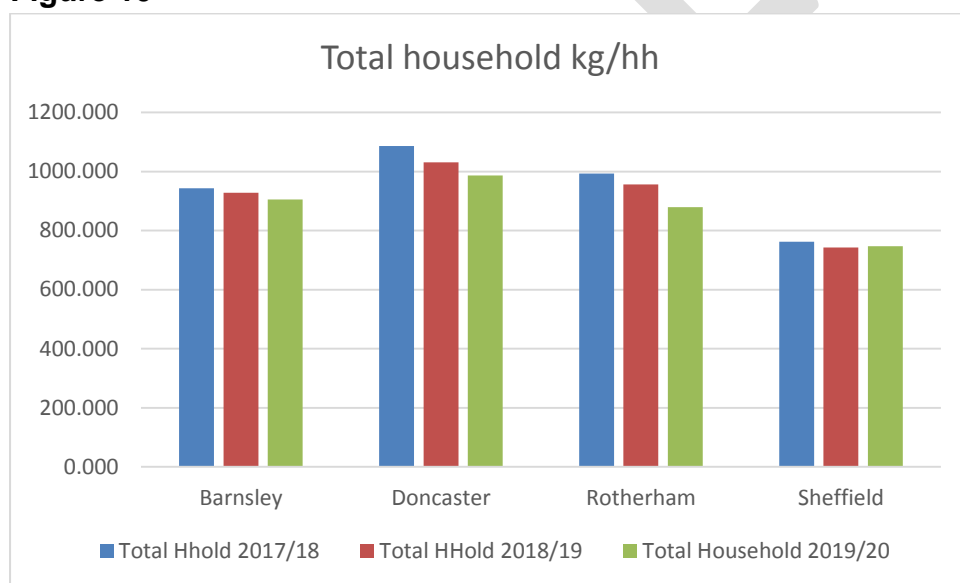


Table 4

Household residual waste	Barnsley	Doncaster	Rotherham	Sheffield
Kg Change 2019/20 vs 2017/18	-37.771	-99.854	-113.981	-15.091

Doncaster and Rotherham both instigated service changes and have exceeded this target. It should be noted that RMBC introduced less capacity for residual waste and a chargeable garden waste collection service this is likely to have been the reason for higher reduction in kilos per household.

Barnsley

Residual waste tonnages have increased overall by 13.9% since the start of the pandemic, this increase has varied drastically month on month. October and indicative November figures are currently showing an increase of 4.2% on the same period last year, this indicates that tonnages could now be starting to stabilise.

Doncaster

The blue bin roll out for co-mingled dry recycling has now bedded in and the focus has moved to increasing participation and improving quality. The 'love food hate waste' campaign has proved successful in Doncaster. Residual waste collected is still higher than usual since the start of lockdown measures was introduced on 23rd March 2020. This target may be unachievable this year.

Rotherham

The Paper and Card bin swap that was introduced in November 2018 has seen a year on year increase. The new Dry Material Recycling (DMR) service implemented in early 2019 gave an increase of 49.37% DMR in 2019/20 compared to the previous year. Contamination levels continue to improve and are now running at an average of 18.5% but with a reducing percentage trend.

The garden waste service has over 40,000 subscriptions. The amount of waste collected in 2019/20 decreasing by 33.57% (5,307.08 tonnes) compared to the previous year. Garden waste recycling at HWRC's, increased by 35.76% (1,300.21 tonnes) in 2019/20 compared to 2018/19.

Sheffield

It is likely that the impact of Covid and the number of people still working from home will result in household waste volumes being up by the end of the 20/21 year compared to the year previous. Current figures show we have collected around 10% more through our black bins in the year to date than last year. Further lockdowns or continued periods of tighter restrictions are unlikely to see this reduce significantly if the period remaining till year end.

1.4.3 Deliver a targeted reduce, re-use recycle campaign to at least 100,000 households across South Yorkshire each year.

1.4.3.1 Composting Campaign 2020

A campaign to promote more home composting was run by the Barnsley, Doncaster and Rotherham (BDR) Waste Partnership and Renewi

Children were invited to produce something creative to promote or explain composting, and they rose to the challenge with posters, models, a Tik Tok video

and a stop motion animation. Prize bundles worth £100 included a compost bin, gardening tools, a grow your own pizza kit, seeds and books about composting and gardening, with a book and a certificate for runners up.

A social media competition for adults attracted entries for the chance to win three state-of-the-art £200 Hotbin hot composting systems.

1.4.4 Provide resources for Key Stage 3 children in South Yorkshire by October 2018

Renewi and the BDR contract management team have now taken the decision to suspend bookings of the Rubbish Adventure workshop and site tours until the New Year at the earliest and potentially the remainder of the financial year. This is due to ongoing concerns about how we can make these Covid-19 safe and prevent the risk of spreading the disease. In place of the school workshop the CELO and the communications team have been working on a series of school resources tailored to specific Key Stages (age groups) that focus on the 3Rs, climate change, the facility and, in the case of secondary aged pupils, the circular economy and UN sustainability goals

The team are also working to create recordings of the Love Food Hate Waste and Treatment Facility talks, write a Love Your Clothes talk and potentially record a site tour video for community groups to view online or download and watch.

At the request of the Councils the team have continued to share composting messages through their social media in addition to topics such as the safe disposal of PPE, batteries, plastic swaps and food waste.

Over the last few months the team has been creating content for an overhauled BDR online website. This will dramatically change the existing site, updating the focus from the construction and early functioning of the facility. The new version will be more user-friendly, better laid out and will provide residents with a much clearer picture of what they can do to help slow climate change, reduce waste, improve the environment and be involved in local campaigns. There will also be a revised section for teachers to download resources to use in school and this will eventually house all recorded sessions too. RMBC are currently building the new site and expect to have it finished before the end of the month.

We continue to chase those organisations selected for support from the Renewi Corporate Social Responsibility fund. However, several of these have been closed since March and re-opening has been impacted on by the tier restrictions and further lockdown. The CELO and Assistant CELO have been working with the communications team to augment the on-line resources for schools.

1.4.4.1 Waste reduction website

1.4.5 All of our actions, practices, policies, and communications will be reviewed and written to uphold the principles of the waste hierarchy by December 2019.

This has been put on hold until further detail on the Resource and Waste Strategy is available.

1.5 Key Activities planned for next period (up to – March 2021)

Barnsley

Work has begun on measuring the carbon output of the borough's waste, this is still in its early stages of development and once completed it is hoped that it will become a useful tool which can be factored into future decisions.

We continue to focus on improving the quality of paper and card recycling with handouts to crew members, updates to the website and targeted coms campaigns.

Fleet continue to work on our vehicle replacement strategy, we are currently in the process of replacing smaller fleet vehicles with an intention to replace RCV's as the technology develops.

Commercial waste continues to focus on increasing its customer base.

Doncaster

Doncaster are continuing to work with their contractors to ensure the robust delivery of their services during the current pandemic along with this they are investigating:

- Commercial options for the HWRC's are in discussion, along with the option to extend the opening times for the sites
- Work is being undertaken with Refurnish/SUEZ to establish how successful the re-use bulky collections are
- Consideration is being given to changing the structure to the bulky waste collections, to alter the number of items that can be collected per order
- Plans to promote the Commercial Waste & Recycling Service and enable the authority to be more competitive with the pricing structure

Rotherham

As well as ensuring a robust service provision during the current pandemic RMBCs focus areas this year are:

- Planning a recycling service for commercial operations including schools
- Increasing the quality of recycling collected at the kerbside and participation in the service, particularly in the communal bins at flats. RMBC are running a trial from January working housing and our steel bin supplier, we are introducing a phased approach in 3 areas and changing locks on bins, adding resistor plates and maybe clear bins to help reduce contamination in the bins.

- Introducing a bin reminder service for the residents, this is being looked at with IT to evolve
- Round efficiencies by procuring route optimisation software, this is being looked at within the procurement of a new in cab and office system
- Exemption of Bartec being requested for 12months until October 2022 to allow for a fully procurement of route planning and scheduling system
- Increasing the opening days of each HWRC to 7 days a week, this is complete.

Sheffield

Further targeted communications campaigns are planned for early in the new year to help target areas where recycling performance seems lower than expected. The areas for this are just being confirmed now.

The review of the HWRC provision in Sheffield is being undertaken and a working group will explore options around creating a supersite within the city and will meet in the coming months to progress to a decision.

BDR Communications Group

Recycle week, thank you for recycling, right things in right bins and waste reduction messages continue to be the focus of the BDR Communications Group.

A proposal for an engagement project is to be considered by the BDR Joint Waste Board.

2. Strategic Priority 2 – Our vision is to work hard to deliver and maintain a dependable and reliable service Priority Lead Gillian Charters, Head of Waste, Sheffield City Council

2.1 Work-stream Status

Work-stream	Owner	End Date	Previous meeting rating	Current meeting rating
Implement, publish and promote South Yorkshire Waste Customer Charter	Gill Gilles	December 2018	Red	Halted for review
Have a plan for how South Yorkshire can deliver a standardised service including materials, containers and collection frequency.	Gillian Charters	December 2019	Blue	Halted for review
Produce and make available a commercial waste guide for businesses across South Yorkshire by March 2019	To be assigned by Steering Group (currently with CELO)	March 2019	Red	Halted for review
Look at the possibility of a shared waste asset and resource plan by April 2019 to maintain a reliable and user-friendly service for residents	Gill Charters	April 2019	Blue	Halted for review

2.2 Key Activities Completed This Period

This work stream has been halted as the emerging Resource and Waste Strategy for England is likely to impact on household and commercial waste collections and may influence the infrastructure required to deliver the outcomes.

2.3 Key Activities planned for next period (up to – March 2021)

Local Partnerships have completed various scenarios for a standardised service across the region taking into account the recent release of “Our waste, our resource: a strategy for England” and the South Yorkshire Councils aspirations.

Carbon modelling work has been completed and the information has been cascaded to Steering Committee. Once comments have been provided to Local Partnerships the work will be completed and Local Partnerships will present their findings to the South Yorkshire Councils.

3. Strategic Priority 3 – Our vision is that all four councils will work together more closely to deliver value for money services Priority Lead, Paul Castle, Service Director, Environment & Transport, Barnsley Council

3.1 Work-stream Status

Work-stream	Owner	End Date	Previous meeting rating	Current meeting rating
Develop and annually review a knowledge bank capturing local and national best practice by December 2018	Beth Baxter	December 2018 (subject to annual review)	Amber	Amber
Deliver and implement a joint commercial plan which will save the Councils £2 million	Paul Castle	December 2021	Amber	Halted for review
Develop a joint calendar of events annually to ensure coverage of emerging best practice and developments in the sector with the least cost	Paul Castle	March 2021	Amber	Halted for review
Support an additional 300 Small Medium Enterprises SMEs across South Yorkshire to access appropriate and cost-effective waste services by December 2021,	To be assigned by Paul Castle	December 2021	Blue	Halted for review

3.2 Key Activities Completed This Period

Information on clinical waste, Brexit and the Environment Bill uploaded on to the portal.

3.3 Key Activities planned for next period (up to – March 2021)

The South Yorkshire Partnership Board pre-meeting of Portfolio Holders has been extended to allow the Portfolio Holders more time to discuss key strategic priorities and how to progress them. A strategic review of the South Yorkshire Waste Strategy is to be considered.

3.4 Key Decisions/Support required:

Although the RWSE consultations are unlikely to progress until March 2021 the overall direction of the SYMWS and its links to the RWSE are to be reviewed as part of the recovery plan for waste services in the region. This is particularly important now the Circular Economy Package has been transposed.

4. Strategic Priority 4 – Our vision is to continue exploring how waste technology can be used to improve recycling and waste services. Priority Lead, Tom Smith Assistant Director, Regeneration and Environment, Rotherham Council

4.1 Work stream Status

Work-stream	Owner	End Date	Previous meeting rating	Current meeting rating
Real time collection information to be available to customers online	Tom Smith	December 2021	Blue	Blue
On-going installation of GPS tracking, state of the art camera systems in-cab technology in 100% of all new and replacement collection vehicles	Tom Smith	December 2021	Green	Green
Invest in resources to drive improved use of new and existing technology for both staff and customers e.g. more online support	Tom Smith	December 2021	Blue	Blue

4.2 Key Activities Completed This Period

The global pandemic has resulted in more people working from home including waste management officers. Work to improve the digital offering to customers from waste management is ongoing.

Waste management teams across the region have been holding Microsoft teams meetings to progress projects where possible.

4.3 Key Activities planned for next period (up to – December 2020)

Further investigation into how digitalisation can improve waste services. A PhD student is undertaken a project on Microsoft Teams and how it has innovated the delivery of the service.

4.4 Key Decisions/Support required:

The PhD student will require assistance in the form of interviews to gain an understanding of the benefits and disbenefits of the use of Microsoft Teams.

5. Strategic Priority 5 – Our vision is to be proactive to influence decision making on waste at a European, national, and local level and to drive investment in infrastructure within South Yorkshire. Beth Baxter BDR Manager

5.1 Work stream Status

Work-stream	Owner	End Date	Previous meeting rating	Current meeting rating
Lobby central government on emerging waste policies and legislation	Beth Baxter	December 2021	Amber	Green
Seek to secure £5 million of external funding and investment for South Yorkshire by 2021 for use in infrastructure projects e.g. Household Waste Recycling Centres	Beth Baxter	December 2021	Grey	Halted for review
Provide resources for continuing professional development for industry recognised bodies	Beth Baxter	December 2021	Amber	Amber

5.1.1 Lobby central government on emerging waste policies and legislation

5.1.1.1 Environment Bill

At the State Opening of Parliament on 19 December 2019 the Queen said environmental measures on several fronts – including a ban on plastic exports – were to be enshrined into law as part of a proposed environment bill. Since then the bill has been subjected to several debates and is now at report stage.

The Bill has been broadly welcomed by the Local Government Association (LGA) ⁷although there are some aspects that raise concerns including:

- Separate collections of recyclable materials as this could cause contractual and financial difficulties
- The Bill's proposals to ban the export of plastic waste to non-OECD countries. The LGA note that the recycling infrastructure in the UK is not sufficiently developed to process the quantities of this material, this will need to be addressed.
- The need for the Extended producer responsibility measures to set out the "full net costs to councils" this should include impacts from litter and fly-tipping

⁷ <https://www.local.gov.uk/sites/default/files/documents/LGA%20briefing%20-%20Environment%20Bill%20-%202R%20HC%20-%200050220.pdf>

The Resources and Waste Strategy for England, published in December 2018, gives pointers to the longer-term policy direction for waste. This is subject to further consultation likely to take place in March 2021 and currently requires a mandatory weekly separate collection of food waste and outlines core materials that should be collected for recycling. This could have major impacts on the PFI Contractors for BDR and Sheffield and their sub-contractors Renewi, Veolia and other contractors well as potential impacts on the services the councils provide.

The Chair of the Joint Waste Board has written to the Under Secretary of State and the Chief Secretary to the Treasury raising concerns on the lack of clarity in the Strategy on funding and timescales local authorities face in relation to implementing changes to their services. A response has been received noting the good work of the South Yorkshire Councils and pointing to the further consultations

5.1.1.2 Brexit

The UK left the European Union at 23:00 GMT on 31 January and has now entered an 11-month period, known as the transition period, that keeps the UK bound to the EU's rules.

On the 30th July 2020 the UK set out its approach to transposing the EU circular economy package (CEP) into UK law. The transposition confirms that national waste plans for England will set out the measures the UK will take to recycle 65% of municipal waste by 2035 and to have no more than 10% municipal waste going to landfill by 2035.

A policy statement issued jointly by the UK, Welsh, Scottish and Northern Irish Governments said that as the majority of changes required to transpose the CEP are small technical changes or a case of adopting the same wording as EU Directives no formal consultation would take place.

The EU directives that are affected are: -

- a. Directive 2008/98/EC on waste (the Waste Framework Directive (WFD)), amended by Directive (EU) 2018/851 of 30 May 2018
- b. Directive 94/62/EC on Packaging and Packaging Waste (PPWD), amended by Directive (EU) 2018/852 of 30 May 2018
- c. Directive 1999/31/EC on the Landfill of waste (LFD), amended by Directive (EU) 2018/850 of 30 May 2018

The three remaining Directives amended by the CEP are the End-of-Life Vehicles (ELV) (Directive 2000/53/EC), Batteries and Accumulators and Waste Batteries and Accumulators (BAWBA) (Directive 2006/66/EC) and Waste Electrical and Electronic Equipment (WEEE) (Directive 2012/19/EU). These have all been amended by a single amending, Directive (EU) 2018/849.

5.1.1.3 Climate and Biodiversity Emergency

The South Yorkshire Councils have all declared climate emergencies⁸ and are working together with other organisations in the region to establish carbon reduction targets.

The waste minimisation and resource efficiency activities in the SYMWS will contribute to achieving these targets.

5.1.1.4 Consultations

Consultations on matters relating to waste have been delayed due to the pandemic and the key consultations on DRS, EPR and Consistency are not now expected until March 2021.

Defra consulted on an alternative form of compliance payable by PCSs that fail to achieve their collection target. This consultation contained two proposals from external organisations for a compliance fee methodology and administrator for 2020. Comments were invited on whether the Secretary of State should set a compliance fee for 2020 and if so the extent to which each of the proposals meet the published evaluation criteria.

[Consultation on WEEE Compliance Fee Methodology 2020 - Defra - Citizen Space](#)

The Government consulted on the introduction of tax on plastic packaging from the 11th March 2020 to the 20th August 2020. This consultation was on the introduction of a new tax on plastic packaging from April 2022.

<https://www.gov.uk/government/consultations/plastic-packaging-tax>

The consultation on the waste management plan for England ended on 15th October 2020. The plan itself focuses on waste arisings and their management and is a high-

⁸ **Barnsley**

<https://www.barnsley.gov.uk/services/our-council/reducing-carbon-emissions/>

Doncaster

<https://www.teamdoncaster.org.uk/the-commission>

Rotherham

<https://moderngov.rotherham.gov.uk/ieListDocuments.aspx?MId=14709>

Sheffield

<https://www.sheffield.gov.uk/home/your-city-council/climate-emergency-response>

level plan. Regular review of the waste management plan for England is necessary to fulfil the requirements of the Waste (England and Wales) Regulations 2011.

According to the consultation document it is not the intention to introduce new policies for the management of waste in England. It is however intended to bring all the policies under one umbrella. This will include any policies from

- Resource and Waste Strategy for England
- Clean Growth Strategy
- Industrial Strategy
- Litter Strategy
- UK Plan for Shipments of Wastes
- National Policy Statements for Hazardous Waste
- Renewable Energy Infrastructure

5.2 Key Activities Completed This Period

Review of local partnership carbon modelling reports.

5.3 Key Decisions/Support required

Funding streams for projects to be identified. Decision to be made on the approach to the response to the consultations in March. Will individual responses be provided or will a co-ordinated response be required.

5.4 Key Project Issues & Risks

The key identified project risks are as follows:

- Insufficient budgets are allocated to allow the work to be undertaken
- There are changes in national government and policy
- There are changes in local government
- Decisions are delayed
- Partners withdraw
- External funding is not available
- Staff resources are not allocated, or a skills gap exists; and
- Impacts of Brexit.